



Test Report

Report No. A226013312310401

Page 1 of 15

Company Name YANGZHOU YANGJIE ELECTRONIC TECHNOLOGY CO., LTD.
shown on Report
Address NO. 56, XINGAN EAST ROAD, YANGZHOU AUTO INDUSTRY PARK, JIA

The following sample(s) and sample information was/were submitted and identified by/on the behalf of the applicant

Sample Name Module
Sample Received Date Feb. 27, 2026
Testing Period Feb. 27, 2026 to Mar. 20, 2026

Test Requested As specified by client, to test Lead (Pb), Cadmium (Cd), Mercury (Hg), Hexavalent Chromium (Cr(VI)), Polybrominated Biphenyls (PBBs), Polybrominated Diphenyl Ethers (PBDEs), Phthalates (DBP, BBP, DEHP, DIBP) in the submitted sample(s).

Test Method/Test Result(s) Please refer to the following page(s).

Conclusion

Tested Sample	According to standard/directive	Result
Submitted Sample	RoHS Directive 2011/65/EU with amendment (EU) 2015/863	PASS

PASS means that the results shown on the report comply with the limits set by RoHS Directive 2011/65/EU with amendment (EU) 2015/863.



Chen kaimin

Chen kaimin
Lab Manager

Date

Mar. 26, 2026

No. R794242020

No.1351, Wanfang Road, Minhang District, Shanghai, China

Test Report

Report No. A226013312310401

Page 2 of 15

The following sample(s) and sample information was/were submitted and identified by/on the behalf of the applicant

CTI Sample ID	Reference Report No. - CTI Sample ID
10	A2260133123104-12
11	A2260133123104-12
13	A2260133123104-12

Remark:

The samples with the reference information in the table above are non-tested in this report. According to the client's statement, the material of the samples in the column "Reference Report No. - CTI Sample ID " in the table above are the same as the " CTI Sample ID".

Test Report

Report No. A226013312310401

Page 3 of 15

Test Method

Tested Item(s)	Test Method	Measured Equipment(s)
Lead (Pb)	IEC 62321-5:2013	ICP-OES
Cadmium (Cd)	IEC 62321-5:2013	ICP-OES
Mercury (Hg)	IEC 62321-4:2013+AMD1:2017 CSV	ICP-OES
Hexavalent Chromium (Cr(VI))	IEC 62321-7-1:2015	UV-Vis
	IEC 62321-7-2:2017 and/or determination of Total Chromium by IEC 62321-5:2013	UV-Vis/ICP-OES
Polybrominated Biphenyls (PBBs)	IEC 62321-12:2023	GC-MS
Polybrominated Diphenyl Ethers (PBDEs)	IEC 62321-12:2023	GC-MS
Phthalates (DBP, BBP, DEHP, DIBP)	IEC 62321-12:2023	GC-MS

Test Result(s)

Tested Item(s)	Result			RL	Limit
	1	2	3		
Lead (Pb)	N.D.	23778 mg/kg*	N.D.	10 mg/kg	1000 mg/kg
Cadmium (Cd)	N.D.	33 mg/kg	N.D.	10 mg/kg	100 mg/kg
Mercury (Hg)	N.D.	N.D.	N.D.	10 mg/kg	1000 mg/kg
Hexavalent Chromium (Cr(VI))	--	N.D. ▽	--	0.10 µg/cm ² (LOQ)	1000 mg/kg
	N.D.	--	N.D.	20 mg/kg	1000 mg/kg

Tested Item(s)	Result			RL	Limit
	4	5	6		
Lead (Pb)	N.D.	N.D.	N.D.	10 mg/kg	1000 mg/kg
Cadmium (Cd)	N.D.	N.D.	N.D.	10 mg/kg	100 mg/kg
Mercury (Hg)	N.D.	N.D.	N.D.	10 mg/kg	1000 mg/kg
Hexavalent Chromium (Cr(VI))	N.D. ▽	--	--	0.10 µg/cm ² (LOQ)	1000 mg/kg
	--	N.D.	N.D.	20 mg/kg	1000 mg/kg

Test Report

Report No. A226013312310401

Page 4 of 15

Tested Item(s)	Result			RL	Limit
	7	8	9		
Lead (Pb)	N.D.	234424 mg/kg*1	48425 mg/kg*1	10 mg/kg	1000 mg/kg
Cadmium (Cd)	N.D.	N.D.	N.D.	10 mg/kg	100 mg/kg
Mercury (Hg)	N.D.	N.D.	N.D.	10 mg/kg	1000 mg/kg
Hexavalent Chromium (Cr(VI))	N.D. ▼	--	--	0.10 µg/cm ² (LOQ)	1000 mg/kg
	--	N.D.	N.D.	20 mg/kg	1000 mg/kg

Tested Item(s)	Result			RL	Limit
	12	14	15		
Lead (Pb)	1247 mg/kg*1	29 mg/kg	N.D.	10 mg/kg	1000 mg/kg
Cadmium (Cd)	N.D.	N.D.	N.D.	10 mg/kg	100 mg/kg
Mercury (Hg)	N.D.	N.D.	N.D.	10 mg/kg	1000 mg/kg
Hexavalent Chromium (Cr(VI))	--	N.D. ▼	--	0.10 µg/cm ² (LOQ)	1000 mg/kg
	N.D.	--	N.D.	20 mg/kg	1000 mg/kg

Tested Item(s)	Result	RL	Limit
	16		
Lead (Pb)	N.D.	10 mg/kg	1000 mg/kg
Cadmium (Cd)	N.D.	10 mg/kg	100 mg/kg
Mercury (Hg)	N.D.	10 mg/kg	1000 mg/kg
Hexavalent Chromium (Cr(VI))	N.D. ▼	0.10 µg/cm ² (LOQ)	1000 mg/kg
	--	20 mg/kg	1000 mg/kg

Test Report

Report No. A226013312310401

Page 5 of 15

Tested Item(s)	Result			RL	Limit
	1	3	5		
Polybrominated Biphenyls (PBBs)					
Monobromobiphenyl	N.D.	N.D.	N.D.	100 mg/kg	1000 mg/kg
Dibromobiphenyl	N.D.	N.D.	N.D.	100 mg/kg	
Tribromobiphenyl	N.D.	N.D.	N.D.	100 mg/kg	
Tetrabromobiphenyl	N.D.	N.D.	N.D.	100 mg/kg	
Pentabromobiphenyl	N.D.	N.D.	N.D.	100 mg/kg	
Hexabromobiphenyl	N.D.	N.D.	N.D.	100 mg/kg	
Heptabromobiphenyl	N.D.	N.D.	N.D.	100 mg/kg	
Octabromobiphenyl	N.D.	N.D.	N.D.	100 mg/kg	
Nonabromobiphenyl	N.D.	N.D.	N.D.	100 mg/kg	
Decabromobiphenyl	N.D.	N.D.	N.D.	100 mg/kg	

Tested Item(s)	Result			RL	Limit
	6	8	9		
Polybrominated Biphenyls (PBBs)					
Monobromobiphenyl	N.D.	N.D.	N.D.	100 mg/kg	1000 mg/kg
Dibromobiphenyl	N.D.	N.D.	N.D.	100 mg/kg	
Tribromobiphenyl	N.D.	N.D.	N.D.	100 mg/kg	
Tetrabromobiphenyl	N.D.	N.D.	N.D.	100 mg/kg	
Pentabromobiphenyl	N.D.	N.D.	N.D.	100 mg/kg	
Hexabromobiphenyl	N.D.	N.D.	N.D.	100 mg/kg	
Heptabromobiphenyl	N.D.	N.D.	N.D.	100 mg/kg	
Octabromobiphenyl	N.D.	N.D.	N.D.	100 mg/kg	
Nonabromobiphenyl	N.D.	N.D.	N.D.	100 mg/kg	
Decabromobiphenyl	N.D.	N.D.	N.D.	100 mg/kg	

Test Report

Report No. A226013312310401

Page 6 of 15

Tested Item(s)	Result		RL	Limit
	12	15		
Polybrominated Biphenyls (PBBs)				
Monobromobiphenyl	N.D.	N.D.	100 mg/kg	1000 mg/kg
Dibromobiphenyl	N.D.	N.D.	100 mg/kg	
Tribromobiphenyl	N.D.	N.D.	100 mg/kg	
Tetrabromobiphenyl	N.D.	N.D.	100 mg/kg	
Pentabromobiphenyl	N.D.	N.D.	100 mg/kg	
Hexabromobiphenyl	N.D.	N.D.	100 mg/kg	
Heptabromobiphenyl	N.D.	N.D.	100 mg/kg	
Octabromobiphenyl	N.D.	N.D.	100 mg/kg	
Nonabromobiphenyl	N.D.	N.D.	100 mg/kg	
Decabromobiphenyl	N.D.	N.D.	100 mg/kg	

Tested Item(s)	Result			RL	Limit
	1	3	5		
Polybrominated Diphenyl Ethers (PBDEs)					
Monobromodiphenyl ether	N.D.	N.D.	N.D.	100 mg/kg	1000 mg/kg
Dibromodiphenyl ether	N.D.	N.D.	N.D.	100 mg/kg	
Tribromodiphenyl ether	N.D.	N.D.	N.D.	100 mg/kg	
Tetrabromodiphenyl ether	N.D.	N.D.	N.D.	100 mg/kg	
Pentabromodiphenyl ether	N.D.	N.D.	N.D.	100 mg/kg	
Hexabromodiphenyl ether	N.D.	N.D.	N.D.	100 mg/kg	
Heptabromodiphenyl ether	N.D.	N.D.	N.D.	100 mg/kg	
Octabromodiphenyl ether	N.D.	N.D.	N.D.	100 mg/kg	
Nonabromodiphenyl ether	N.D.	N.D.	N.D.	100 mg/kg	
Decabromodiphenyl ether	N.D.	N.D.	N.D.	100 mg/kg	

Test Report

Report No. A226013312310401

Page 7 of 15

Tested Item(s)	Result			RL	Limit
	6	8	9		
Polybrominated Diphenyl Ethers (PBDEs)					
Monobromodiphenyl ether	N.D.	N.D.	N.D.	100 mg/kg	1000 mg/kg
Dibromodiphenyl ether	N.D.	N.D.	N.D.	100 mg/kg	
Tribromodiphenyl ether	N.D.	N.D.	N.D.	100 mg/kg	
Tetrabromodiphenyl ether	N.D.	N.D.	N.D.	100 mg/kg	
Pentabromodiphenyl ether	N.D.	N.D.	N.D.	100 mg/kg	
Hexabromodiphenyl ether	N.D.	N.D.	N.D.	100 mg/kg	
Heptabromodiphenyl ether	N.D.	N.D.	N.D.	100 mg/kg	
Octabromodiphenyl ether	N.D.	N.D.	N.D.	100 mg/kg	
Nonabromodiphenyl ether	N.D.	N.D.	N.D.	100 mg/kg	
Decabromodiphenyl ether	N.D.	N.D.	N.D.	100 mg/kg	

Tested Item(s)	Result		RL	Limit
	12	15		
Polybrominated Diphenyl Ethers (PBDEs)				
Monobromodiphenyl ether	N.D.	N.D.	100 mg/kg	1000 mg/kg
Dibromodiphenyl ether	N.D.	N.D.	100 mg/kg	
Tribromodiphenyl ether	N.D.	N.D.	100 mg/kg	
Tetrabromodiphenyl ether	N.D.	N.D.	100 mg/kg	
Pentabromodiphenyl ether	N.D.	N.D.	100 mg/kg	
Hexabromodiphenyl ether	N.D.	N.D.	100 mg/kg	
Heptabromodiphenyl ether	N.D.	N.D.	100 mg/kg	
Octabromodiphenyl ether	N.D.	N.D.	100 mg/kg	
Nonabromodiphenyl ether	N.D.	N.D.	100 mg/kg	
Decabromodiphenyl ether	N.D.	N.D.	100 mg/kg	

Test Report

Report No. A226013312310401

Page 8 of 15

Tested Item(s)	Result			RL	Limit
	1	3	5		
Phthalates (DBP, BBP, DEHP, DIBP)					
Butyl benzyl phthalate (BBP) CAS#:85-68-7	N.D.	N.D.	N.D.	50 mg/kg	1000 mg/kg
Dibutyl phthalate (DBP) CAS#:84-74-2	N.D.	N.D.	N.D.	50 mg/kg	1000 mg/kg
Di-(2-ethylhexyl) phthalate (DEHP) CAS#:117-81-7	N.D.	N.D.	N.D.	50 mg/kg	1000 mg/kg
Diisobutyl phthalate (DIBP) CAS#:84-69-5	N.D.	N.D.	N.D.	50 mg/kg	1000 mg/kg

Tested Item(s)	Result			RL	Limit
	6	8	9		
Phthalates (DBP, BBP, DEHP, DIBP)					
Dibutyl phthalate (DBP) CAS#:84-74-2	N.D.	N.D.	N.D.	50 mg/kg	1000 mg/kg
Di-(2-ethylhexyl) phthalate (DEHP) CAS#:117-81-7	N.D.	N.D.	N.D.	50 mg/kg	1000 mg/kg
Butyl benzyl phthalate (BBP) CAS#:85-68-7	N.D.	N.D.	N.D.	50 mg/kg	1000 mg/kg
Diisobutyl phthalate (DIBP) CAS#:84-69-5	N.D.	N.D.	N.D.	50 mg/kg	1000 mg/kg

Tested Item(s)	Result		RL	Limit
	12	15		
Phthalates (DBP, BBP, DEHP, DIBP)				
Butyl benzyl phthalate (BBP) CAS#:85-68-7	N.D.	N.D.	50 mg/kg	1000 mg/kg
Di-(2-ethylhexyl) phthalate (DEHP) CAS#:117-81-7	N.D.	N.D.	50 mg/kg	1000 mg/kg
Dibutyl phthalate (DBP) CAS#:84-74-2	N.D.	N.D.	50 mg/kg	1000 mg/kg
Diisobutyl phthalate (DIBP) CAS#:84-69-5	N.D.	N.D.	50 mg/kg	1000 mg/kg

Test Report

Report No. A226013312310401

Page 9 of 15

Sample/Part Description

No.	CTI Sample ID	Description
1	1	White plastic
2	2	Metal with silvery plating
3	3	White plastic with black printing
4	4	Silvery/cupreous metal pin
5	5	Colorless transparent adhesive
6	6	Colorless transparent adhesive
7	7	Silvery metal pin
8	8	Orange electronic components(Tested as a whole)
9	9	Silvery/black electronic component(Tested as a whole)
10	12	Silvery/brown electronic components(Tested as a whole)
11	14	Silvery soldering tin
12	15	Ceramic PCB(Tested as a whole)
13	16	Metal with silvery plating

Remark: The sample(s) had been dissolved totally tested for Lead, Cadmium, Mercury.

-MDL = Method Detection Limit

-N.D. = Not Detected (<MDL or LOQ or RL)

-RL= Report Limit

-mg/kg = ppm = parts per million

-1000 mg/kg = 0.1%

-LOQ = Limit of Quantification, The LOQ of Hexavalent chromium is 0.10 $\mu\text{g}/\text{cm}^2$

-▼The sample is negative for Cr(VI) – The Cr(VI) concentration is below 0.10 $\mu\text{g}/\text{cm}^2$. The coating is considered a non-Cr(VI) based coating. Information on storage conditions and production date of the tested sample is unavailable and thus Cr(VI) results represent status of the sample at the time of testing.

-The sample(s) was tested as a whole, because it's impossible to disassemble or separate it by current equipment and technology. The result(s) shown on this report may be different from the content of any homogeneous material.

-In consideration of the analysis requirement and the limit of sample volume, the screening test for the article is based on components / material enough to test.

-*=According to the client's statement, the material of the sample(s) fall into exemption items 6(c) according to EU Directive 2011/65/EU :Copper alloy containing up to 4% lead by weight.

-*1= According to the client's statement, the material of the sample(s) fall into exemption items 7(c) –I according to EU Directive 2011/65/EU : Electrical and electronic components containing lead in a glass or ceramic other than dielectric ceramic in capacitors, e.g. piezoelectronic devices, or in a glass or ceramic matrix compound.

-The test result(s) of this report is/are presented in reference to the result(s) that reported in A2260133123104.

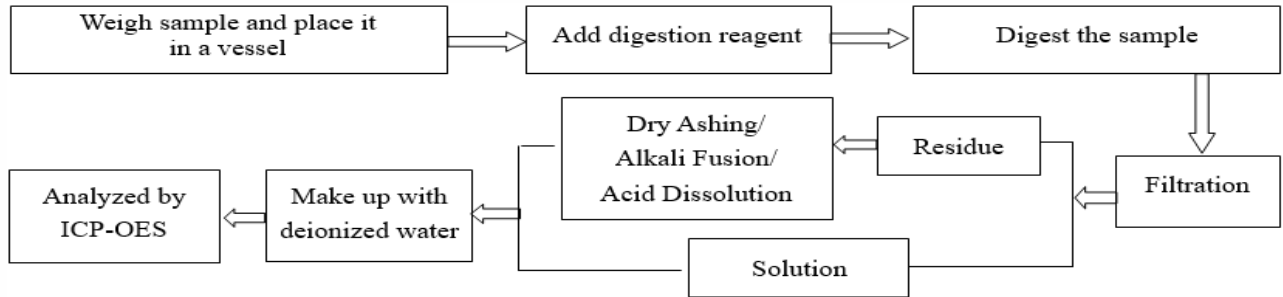
Test Report

Report No. A226013312310401

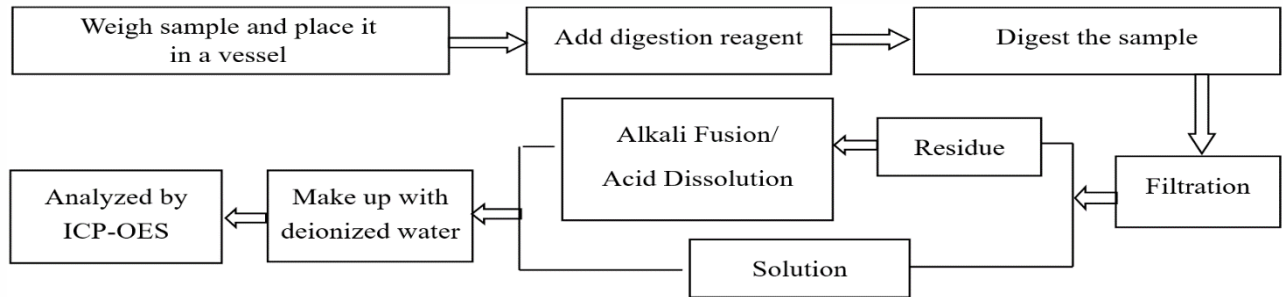
Page 10 of 15

Test Process

1. Lead (Pb), Cadmium (Cd), Chromium(Cr)

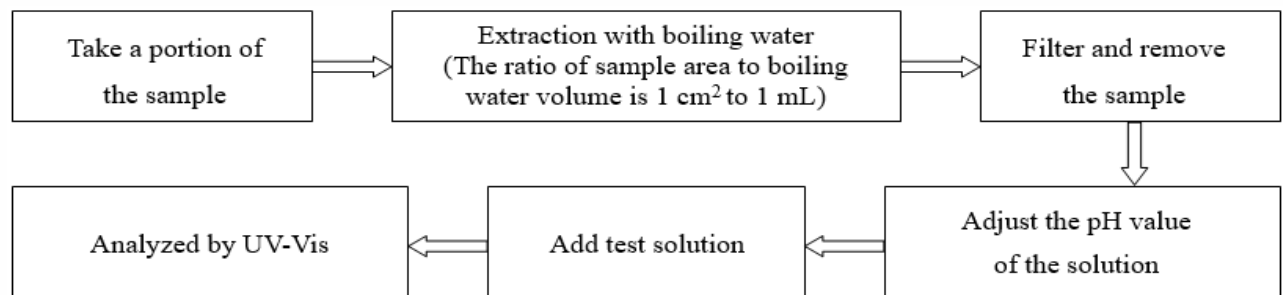


2. Mercury (Hg)

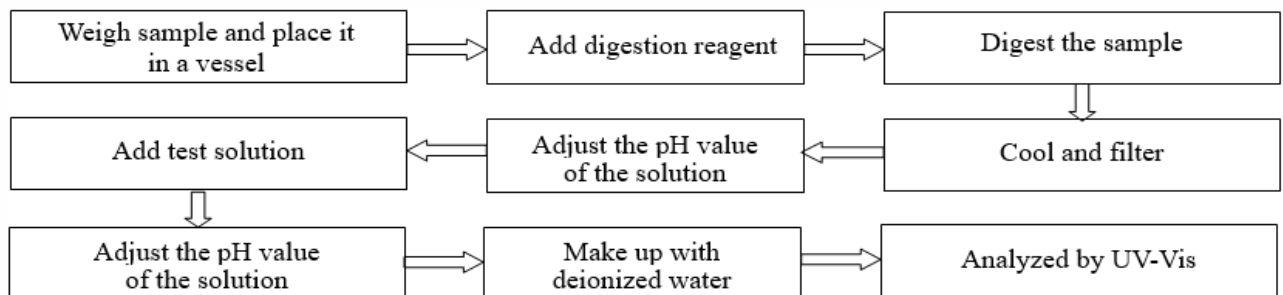


3. Hexavalent Chromium (Cr(VI))

(1) IEC 62321-7-1:2015



(2) IEC 62321-7-2:2017

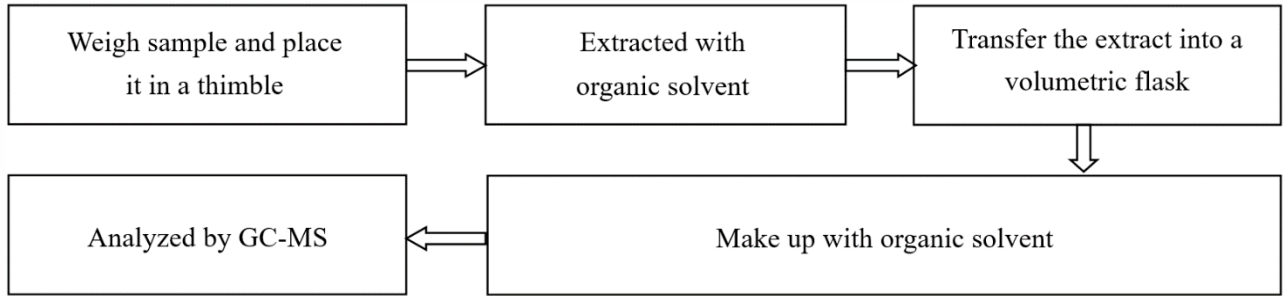


Test Report

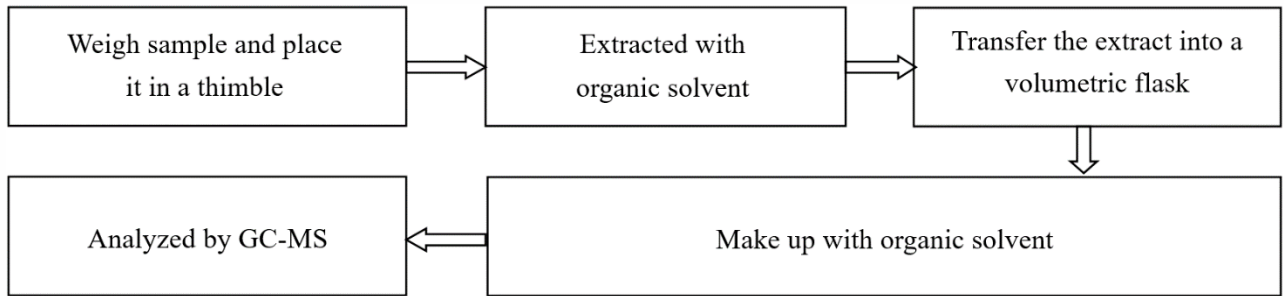
Report No. A226013312310401

Page 11 of 15

4. Polybrominated Biphenyls (PBBs), Polybrominated Diphenyl Ethers (PBDEs)



5. Phthalates (DBP, BBP, DEHP, DIBP)



Test Report

Report No. A226013312310401

Page 12 of 15

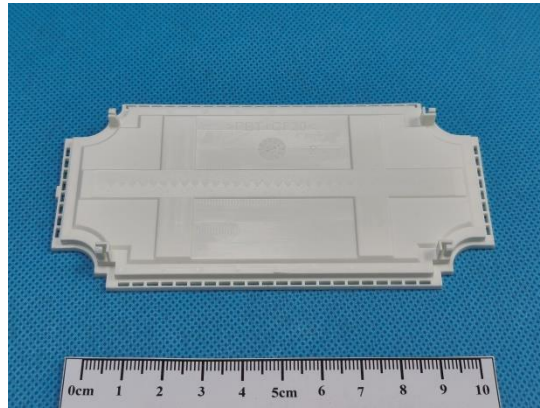
Photo(s) of the sample(s)

Final Product

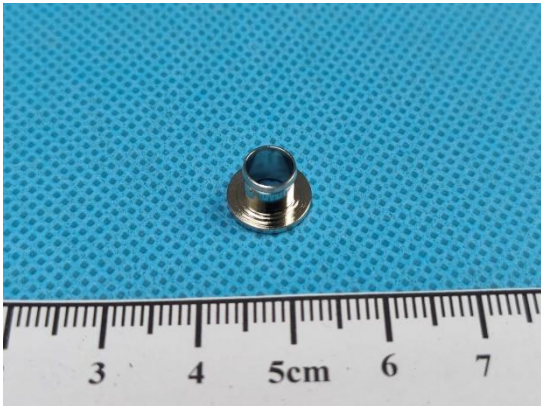
1



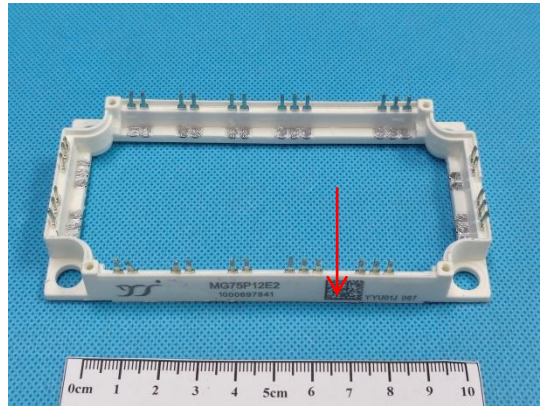
2



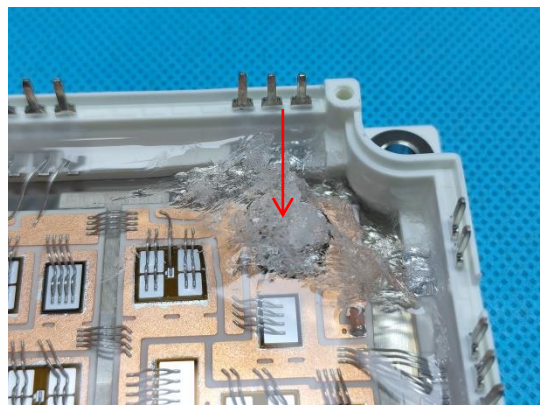
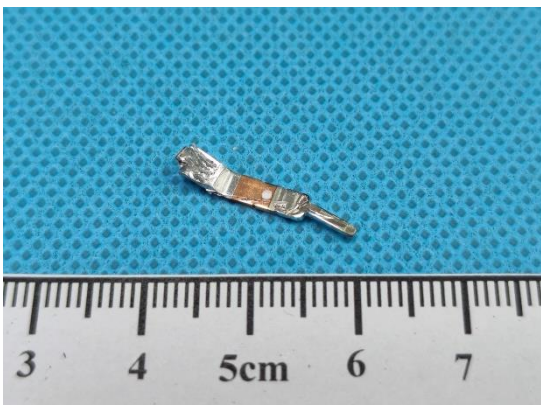
3



4



5

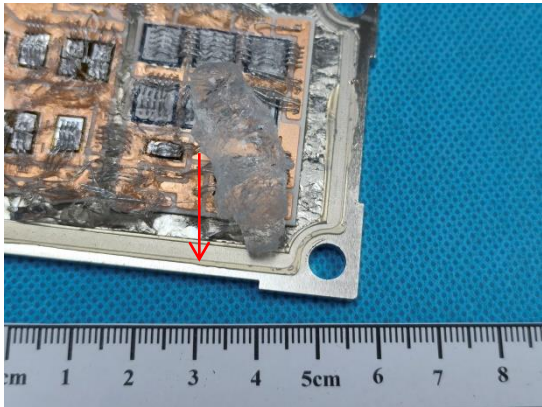


Test Report

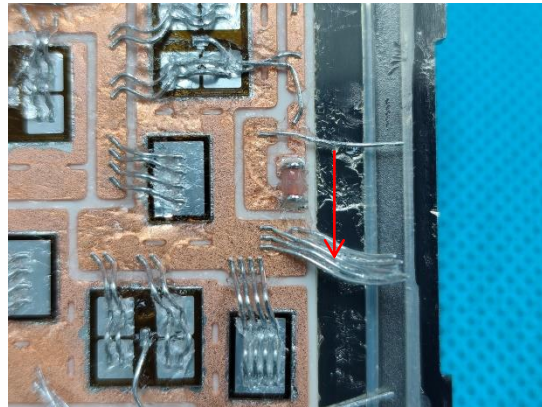
Report No. A226013312310401

Page 13 of 15

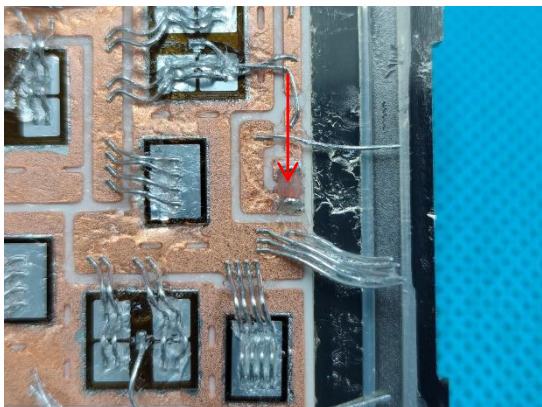
6



7



8

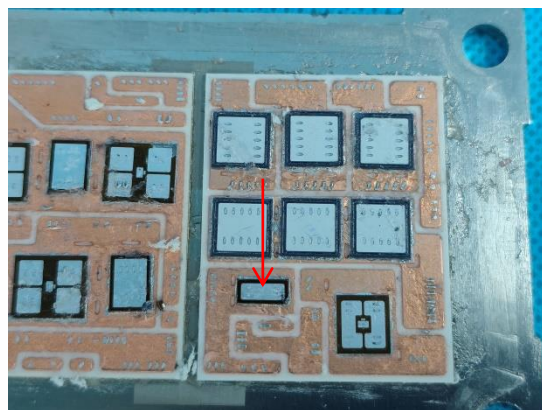
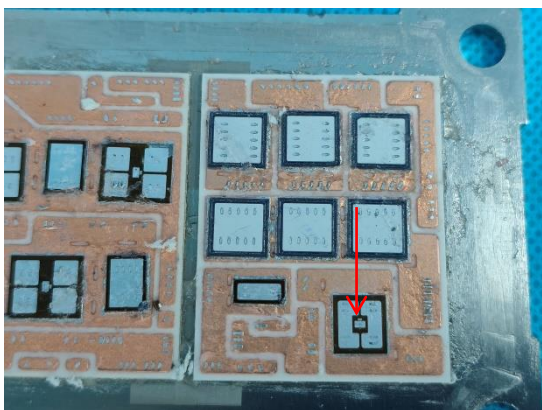


9



10(Client Reference Photo(Non-tested sample))

11(Client Reference Photo(Non-tested sample))

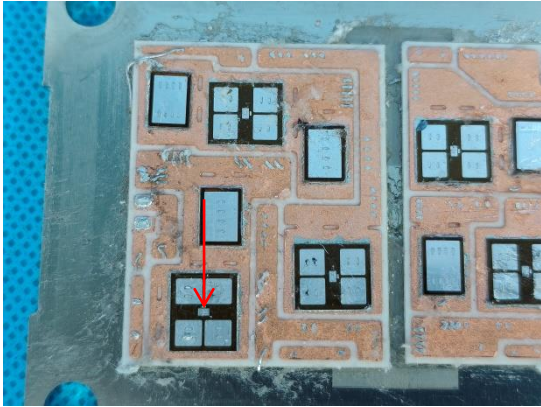


Test Report

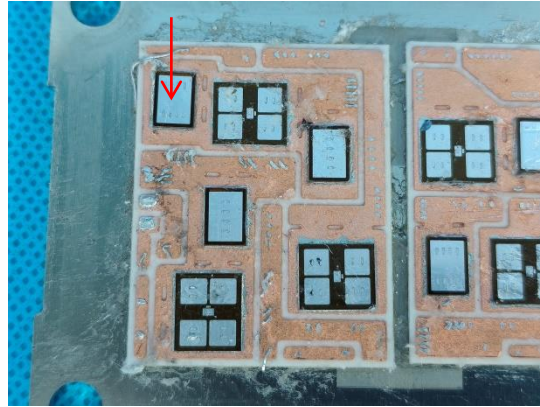
Report No. A226013312310401

Page 14 of 15

12



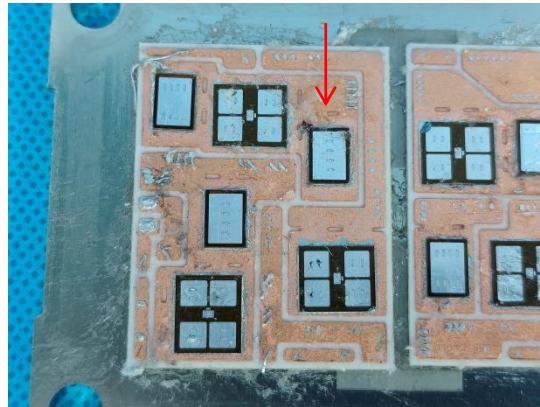
13(Client Reference Photo(Non-tested sample))



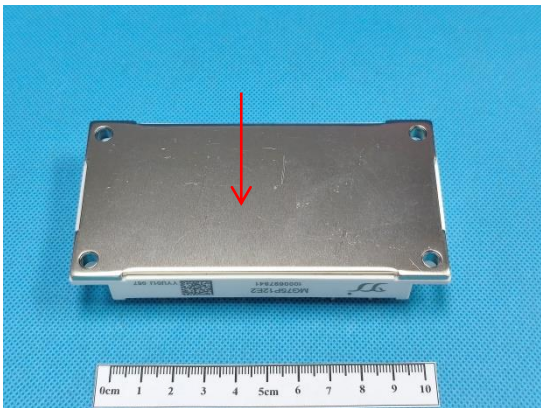
14



15



16



Test Report

Report No. A226013312310401

Page 15 of 15

Statement:

1. This report is considered invalid without approved signature, special seal and the seal on the perforation;
2. The Company Name shown on Report and Address, the sample(s) and sample information was/were provided by the applicant who should be responsible for the authenticity which CTI hasn't verified;
3. The result(s) shown in this report refer(s) only to the sample(s) tested;
4. Unless otherwise stated, the decision rule for conformity reporting is based on Binary Statement for Simple Acceptance Rule (w=0) stated in ILAC-G8:09/2019 / CNAS-GL015:2022;
5. Without written approval of CTI, this report can't be reproduced except in full;
6. In case of any discrepancy between the English version and Chinese version of the reports (if generated), the Chinese version shall prevail.

*** End of Report ***

Appendix

Client Reference Information

D1, D2, D1N, D3, D5, DA, M1, M1N, M2, M3, M4, M5, M7, M8, M9, NM2, NM3
F0, F1, F2, F2D, F2N, F3, F4N, FJ, F5, F6, GJ, FS
L1, L2, T1, T1A, T1D, T2, T2A
C1, C2, C3, C21, C2A, C1L
P2, P2S, P2N, P3, P3S
E1, E1A, E2, E2A, E3

Statement:

1. The Appendix Information was/were provided by the applicant who should be responsible for the authenticity which CTI hasn't verified.
2. The Appendix Information is/are the supplement(s) for the Report A226013312310401.